

# PUMPING HOUSE

Corporate Brochure

# ABOUT US

The Pumping House is a Grade II listed Victorian building set on six acres of grounds on the edge of the Sherwood Forest. Built in 1909, this is a rare venue with heritage that has been restored to meet contemporary tastes.

Two large event spaces, five themed rooms, ten guest bedrooms – with contemporary fittings and facilities, the rooms retain the Edwardian features and materials of the historic venue.

The Pumping House benefits from a variety of original features, such as a striking red brick frontage, a towering combustor chimney and full-length arched windows which let in an abundance of natural light. The central space is an impressive double-height

Engine Hall, with space for meetings, conferences and seated dinners, while the licensed ceremony room on the upper floor has views over the forest.

Our building is late licensed until 12.30 am, and is a short drive from Sheffield, Nottingham, Lincoln and Mansfield. The Grade II listed Victorian house is on the edge of a forest: where tradition meets modernity.







# OUR HISTORY

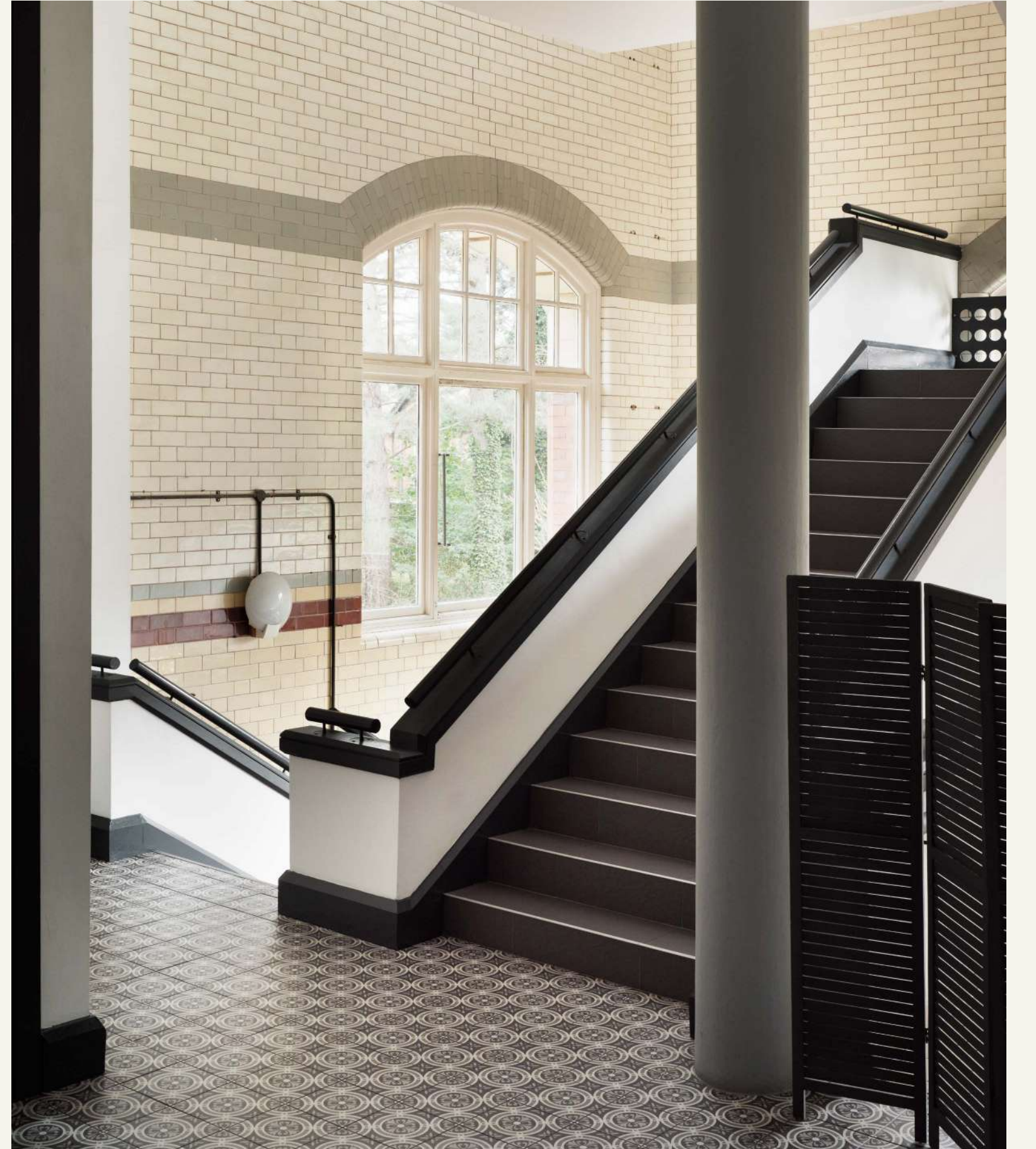
Founded in 1909, The Pumping House was originally called Boughton Pumping Station.

The main pump house was designed by W B Starr, an esteemed Victorian architect from Nottingham. It featured a huge brick chimney which is still a distinctive local landmark to this day – and a significant visual symbol of any wedding here. The pump house was commissioned by the Nottingham Corporation Water Department and was capable of pumping 20 million imperial gallons (91,000m<sup>3</sup>) per day through

15 ¾ miles of 30 inch pipe from the underground sandstone Aquifer.

Boughton Pumping Station later passed into the hands of Severn Trent Water and was officially made a Grade II listed building in 1974. This means it is “of special interest, warranting every effort to preserve it.” The pump house has had various uses since the mid 70s, and was painstakingly renovated in TK to transform it into a contemporary wedding venue which combines heritage and character with modern-day sophistication.







# VENUE SPECIFICATION

---

## HIRE TIMES

Monday-Sunday | 10:00am-12:30am

---

## FACILITIES

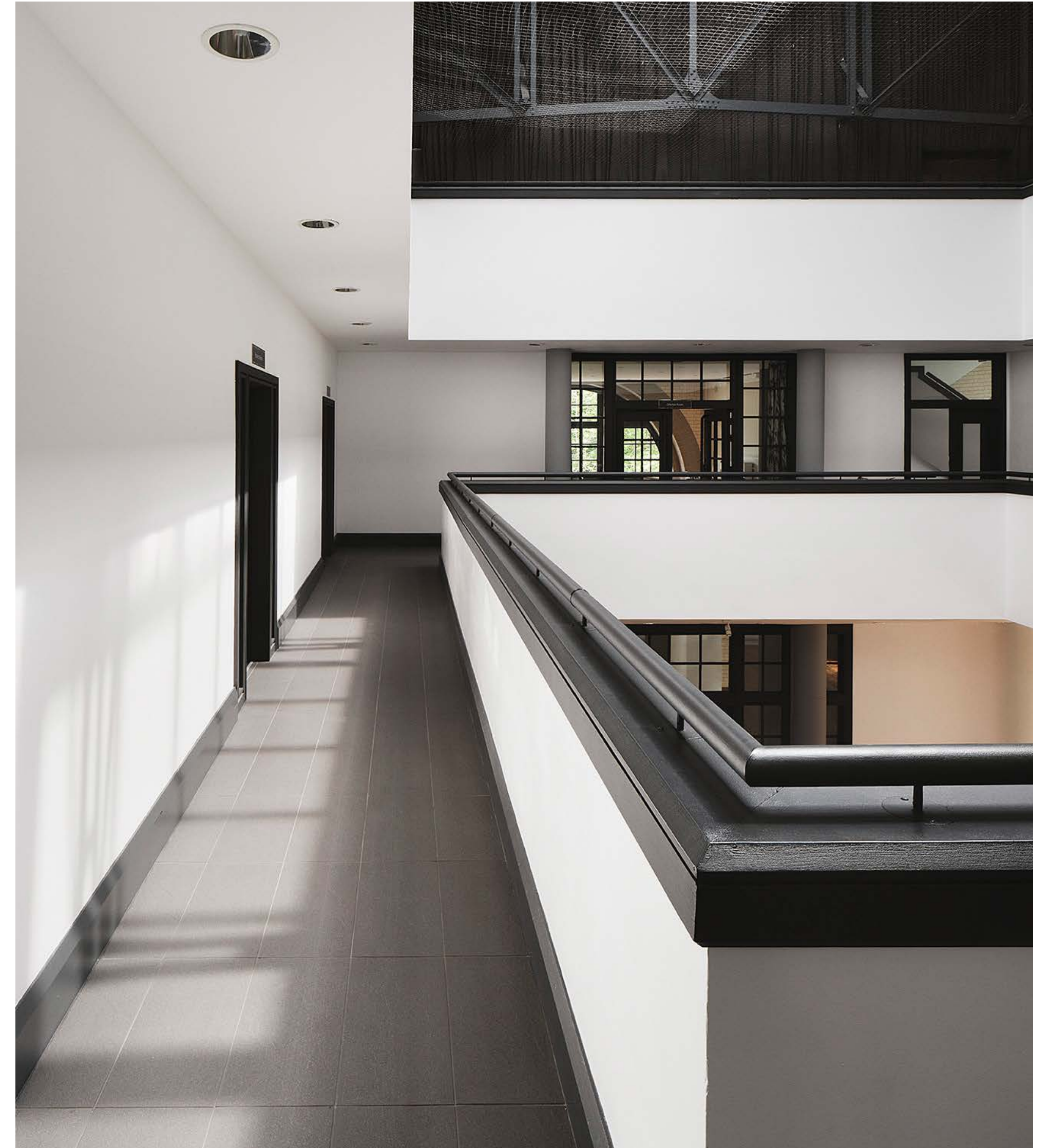
Main Hall, Cloakroom, Licensed Ceremony Room, four Themed Rooms, Games Room and ten Self Catered Suites.

---

## CAPACITIES

The Engine Hall for up to 250  
Ollerton Room for up to 100

---







# DAY DELEGATE PACKAGE

From £30.00 per person excluding vat based on a minimum of 8 delegates. Monday-Sunday | up to 8 hours room hire

## This package includes:

- Buffet lunch and three servings of tea/coffee
- Access to free Wi-Fi
- Extensive wired internet power points
- On-site parking

## Engine Hall:

- Screen and projector
- Flipcharts, notepads and pens

## Ollerton Room:

- Screen and projector
- Flipcharts, notepads and pens

# DAY DELEGATE PACKAGE

From £35 per person excluding vat based on a minimum of 8 delegates. Monday-Sunday | up to 8 hours room hire

This package includes:

- Hot lunch and three servings of tea/coffee
- Access to free Wi-Fi
- Extensive wired internet and power points
- On-site parking

Engine Hall:

- Screen and projector
- Flipcharts, notepads and pens

Ollerton Room:

- Screen and projector
- Flipcharts, notepads and pens



# VENUE HIRE PRICES

SPACE	FULL DAY (OVER 4 HOURS)	HALF DAY (4 HOURS OR LESS)	CAPACITY	SIZE
Engine Hall	£575	£300	Theatre 200 pax Cabaret 100 pax Dining 170 pax	364 m <sup>2</sup>
Ollerton Room	£500	£275	Standing 120 pax Theatre 100 pax	91 m <sup>2</sup>
Conservatory	£275	£150	Standing 60 pax Theatre 40 pax	63 m <sup>2</sup>
Oak Room	£125	£85	Standing 30 pax Theatre 50 pax	39 m <sup>2</sup>
Syndicate Rooms (Excluding Engine Hall)	£100	£75	-	-

# VENUE HIRE PRICES

SPACE	FULL DAY (OVER 4 HOURS)	HALF DAY (4 HOURS OR LESS)	CAPACITY	SIZE
Botanical Room	£100	£75	6 pax	14.4 m <sup>2</sup>
Butterfly Room	£100	£75	6 pax	16 m <sup>2</sup>
Type Room	£100	£75	6 pax	16 m <sup>2</sup>
Map Room	£100	£75	6 pax	14.4 m <sup>2</sup>
Syndicate Rooms (Excluding Engine Hall)	£100	£75	-	-

# OUR SPACES



Two large event spaces, ten intimate guest rooms, your personal taste.

# THE SPACES

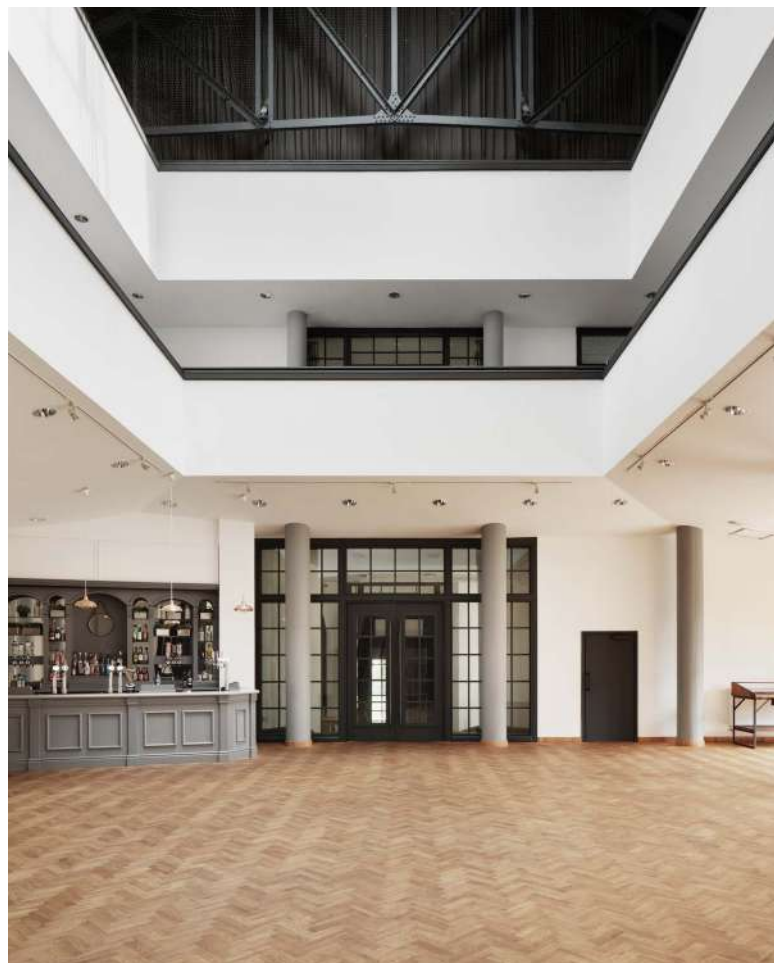
## The Grounds

Set in six acres of ancient woodlands, The Pumping House has exceptional opportunities to enjoy the outdoors.



## The Engine Hall

The double-height Engine Hall is filled with natural daylight, making an impressive setting for meetings, conferences or receptions.



## Ollerton Room

With beautiful parquet flooring and original paned windows, the Ollerton Room is the perfect setting for private events.



## Conservatory Bar

This intimate bar enjoys a backdrop of Sherwood Forest for a quiet drink surrounded by your best company.



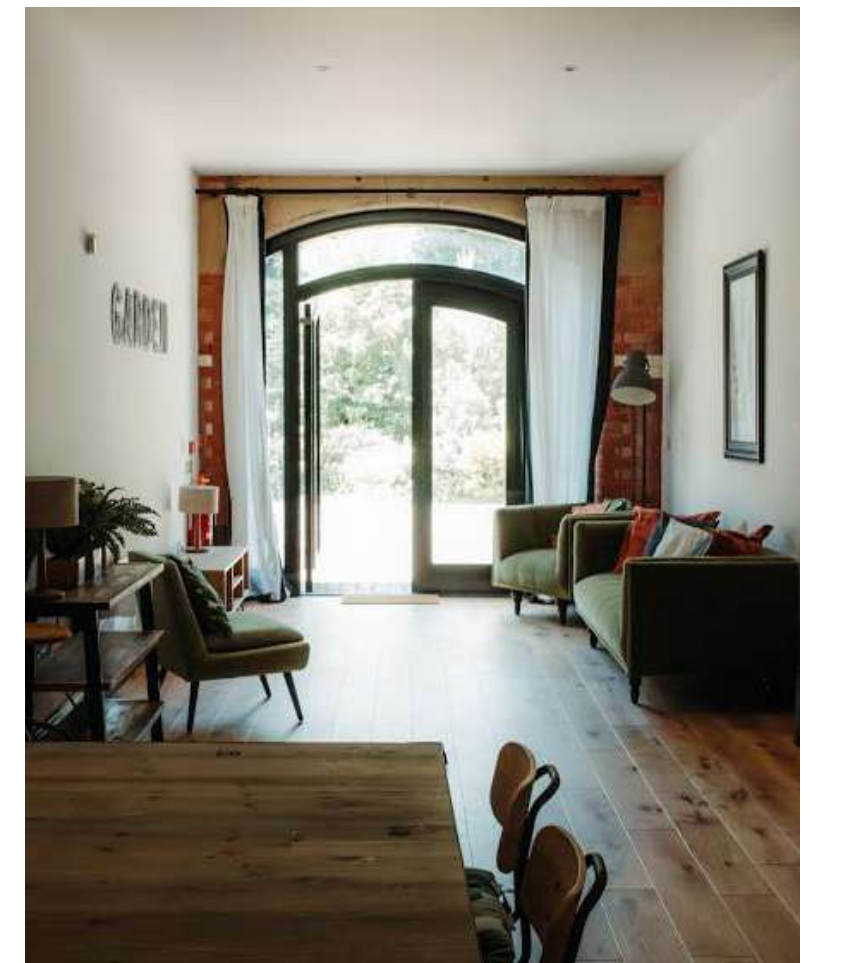
## Additional Rooms

The Pumping House homes multiple spaces for break out spaces, from The Boutique to the Cinema Room.



## The Quarters

Set in six acres of ancient woodland, The Pumping House houses an oasis of beautifully thought-through luxury apartments.











# OUR HOSPITALITY



We're proud of our space and setting, but we understand that the best celebrations offer memorable food and drink. Our team of chefs use locally sourced ingredients to create menus that are bespoke to you and your guests' tastes.

# MENUS

We know good food. We work with our in-house chefs to provide bespoke menus to suit your taste. We facilitate the highest quality catering.

Our team of chefs use locally sourced ingredients to create menus that are bespoke to you and your guests' tastes.

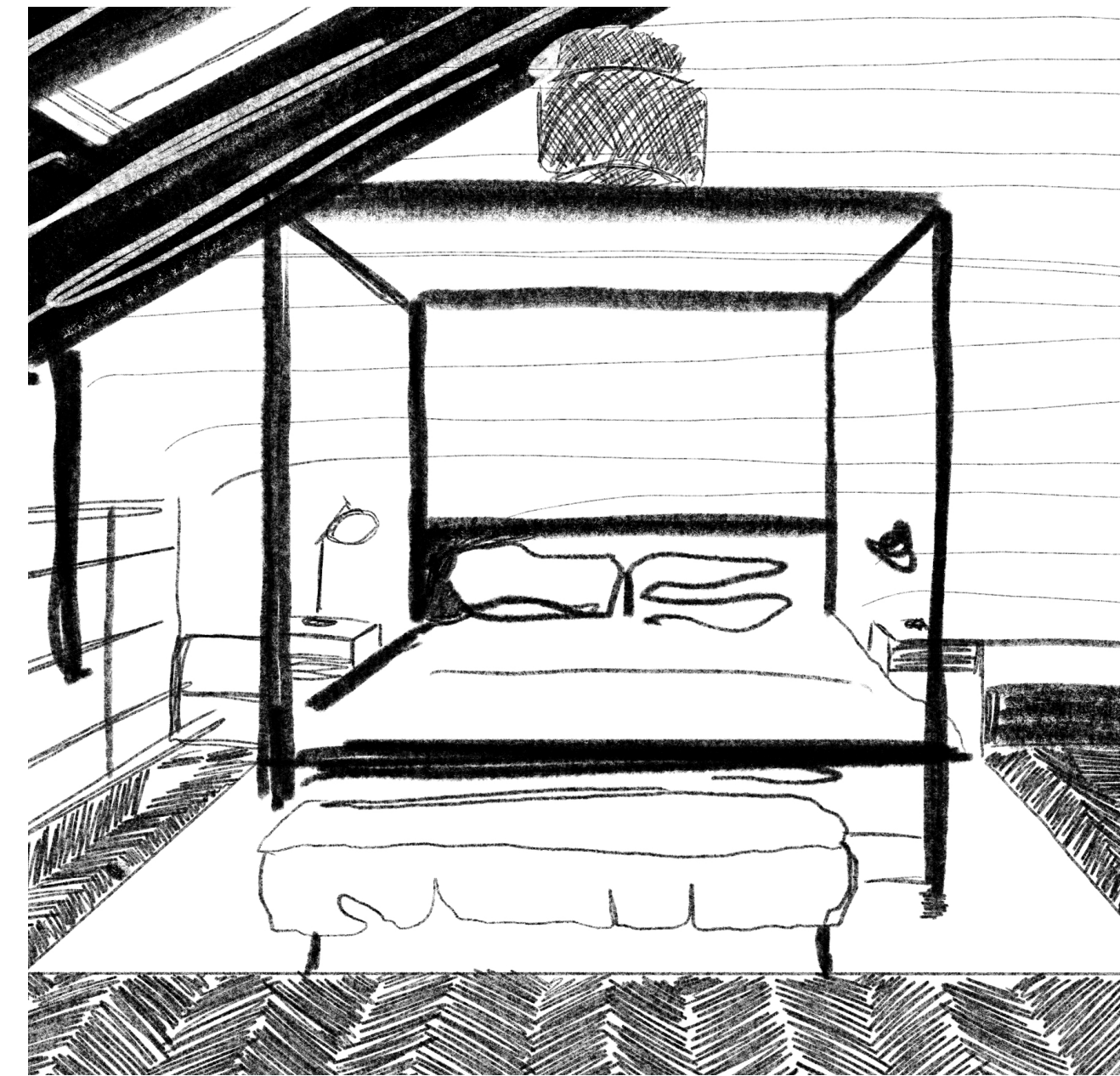
Choose from a variety of menus to suit your palette, let's create food and drink pairings that truly sing.







# ACCOMMODATION



The Pumping House's onsite accommodation is inspired by its rich history. With contemporary fittings and facilities, all rooms retain the Edwardian features and materials of the historic venue. Located at the back of the venue, there are six double rooms and four family suites, in addition to the Bridal Suite.

# THE QUARTERS

Drawing inspiration from our storied past, The Pumping House unveils an oasis of beautifully thought-through luxury apartments. Nestled at the rear of our historic venue, these sumptuous, selfcatering suites reinvigorate authentic Edwardian architecture with contemporary elegance.

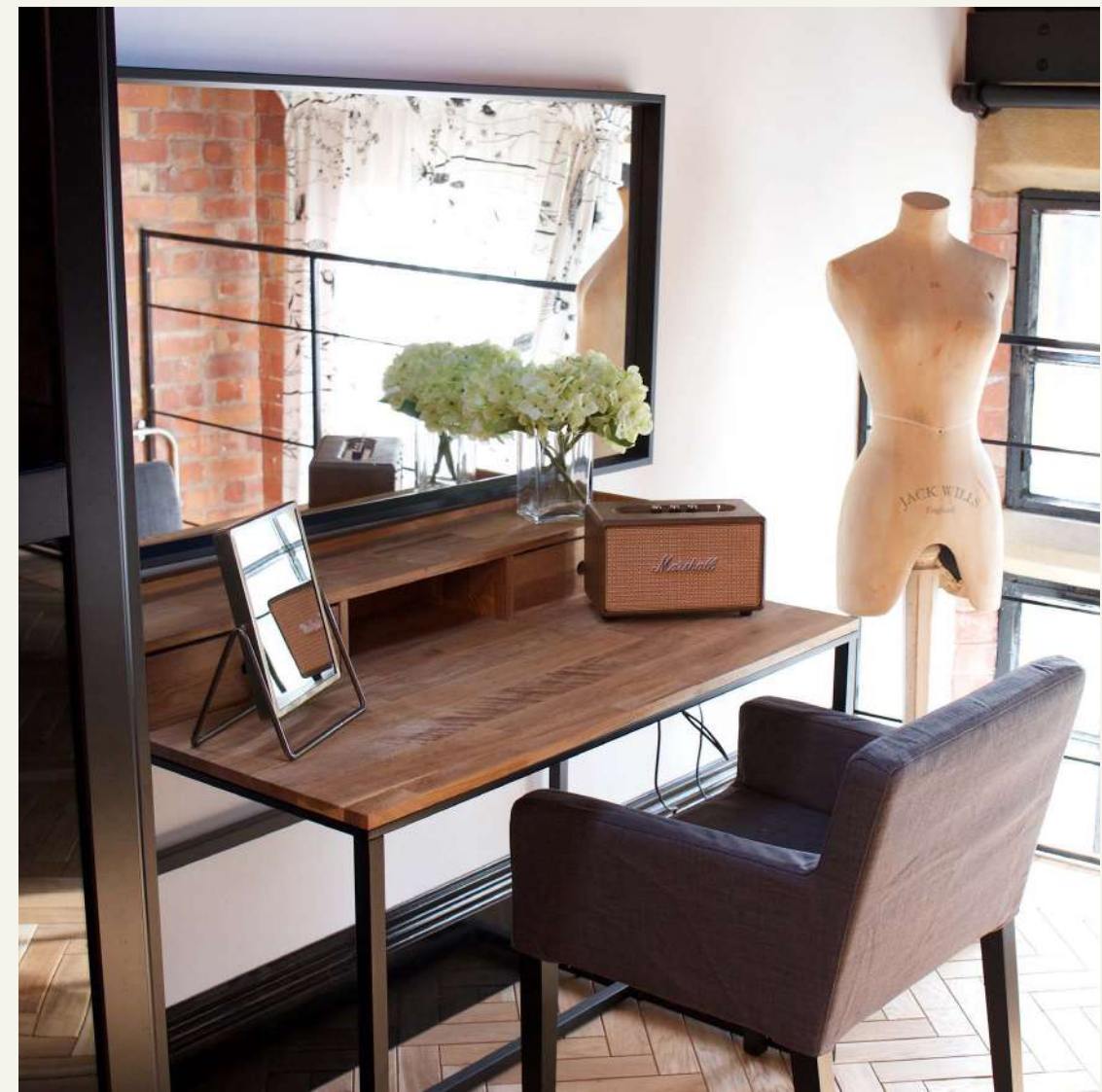
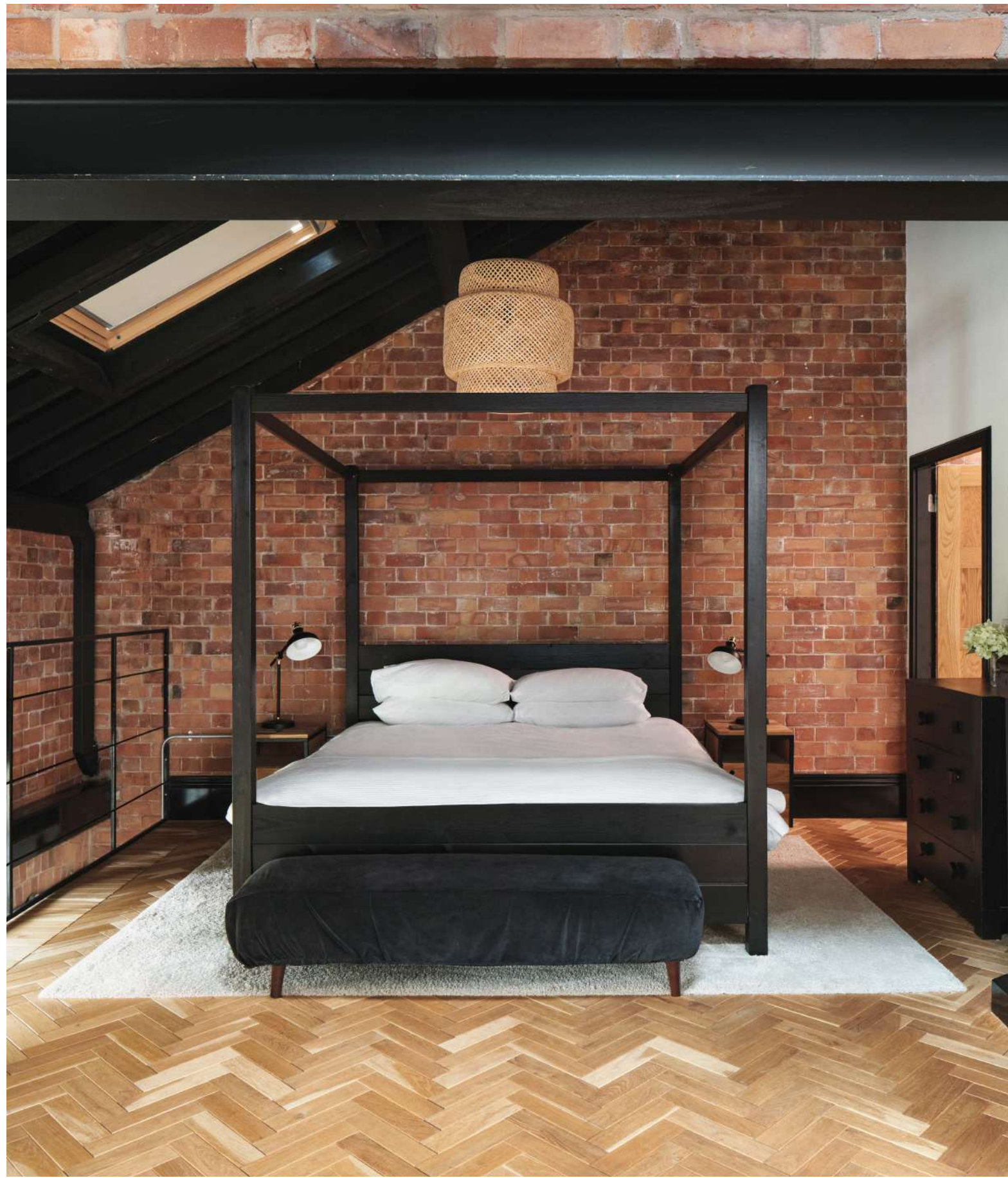
Our flagship Suite is a breath-taking haven capaciously spanning over two floors. Styled with harmonious, geometric forms, original antique furniture blends with exposed brick walls conjuring chic Bauhaus modernism.

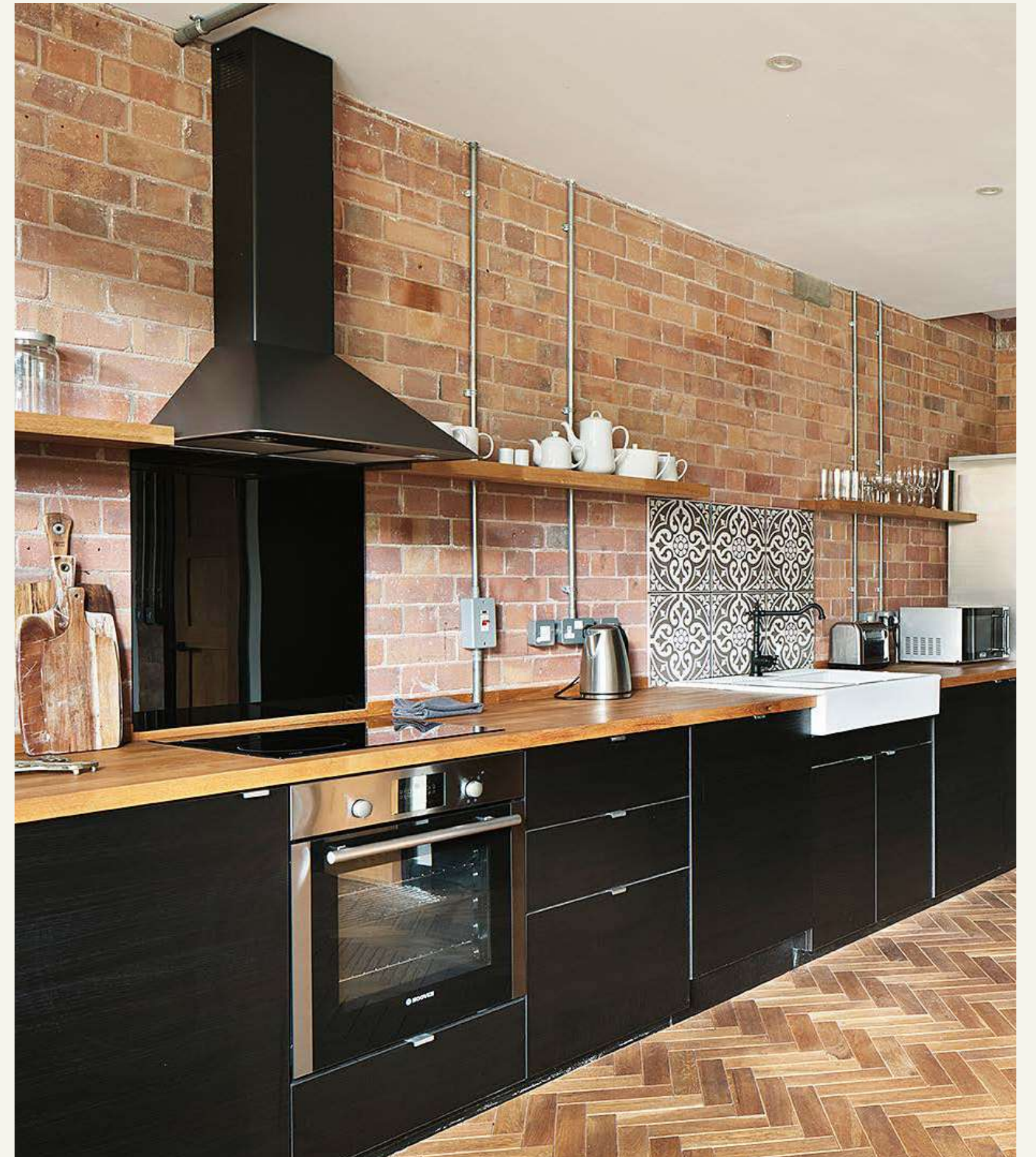
Every one of our individually designed apartments is filled with an

unrivalled attention to detail. Melding grand turn-of-the-century elements with industrial-chic flair, each space is a work of bespoke craftsmanship. Upon completion, The Quarters proudly offer one Master Suite, five doubles and four Family Suites.

Light, airy and exceptionally spacious, all apartments channel the feeling of a cutting-edge pied-a-terre over a traditional hotel room. Each suite comes complete with fully equipped kitchen with all the necessities required for a truly memorable time. Bedrooms and lounges are furnished with iconic, statement pieces and private bathrooms are finished with luxurious roll top baths.







# OUR LOCATION

Located in the ancient woodlands of Sherwood Forest, The Pumping House is a gem of Victorian industrial architecture.

The Sherwood Forest is one of the UK's most precious ancient woodlands. Home to the legend of Robin Hood, it is a place alive in folklore, history and natural beauty.

Built in 1909 by the Nottingham Water Department, the building retains the charm of its industrial heritage, with distinctive red-brick frontage, an original combustor chimney and full-length arched windows. The lovingly restored interiors can be configured to create a truly personal event.

## Address:

The Pumping House, Brake Lane  
Ollerton, NG22 9HQ

## By Train:

Retford: 19 minutes drive  
Mansfield: 28 minutes drive  
Newark: 30 minutes drive

## Additional Details:

On the outskirts of Ollerton, The Pumping House is under an hours' drive from Sheffield, Nottingham, Lincoln and Mansfield.





# PUMPING HOUSE

[thepumphouse.com](http://thepumphouse.com), [info@thepumphouse.com](mailto:info@thepumphouse.com)

We are accepting bookings for 2024, 2025 and 2026, please enquire to find out more or call us on +44 (0)1623 705800.